



Hal Johnson President
Jim Genesee Vice President
Joe Lesnick Treasurer
Tony Calabrese Secretary
Chris Hayes Chairperson of Programs

Meeting Schedule

November 13th Monday
Dwarf Jade Forrest
Demo by Chris Hayes
Election Slate Vote!
If you have a tree in
Fall Coloration –
Please bring to the
meeting for Member's
display table.

Events Schedule

December 16th Saturday
Please Pre-Pay \$23 for
Luncheon
HOLIDAY LUNCHEON 12 N
AUCTION 1 PM

For Updates

www.longislandbonsai.org

If you are interested
in attending a
workshop, please
email Chris at
libonsai@yahoo.com

If you are a member
and not receiving
our emails, please
email Hal at
libonsai@yahoo.com

October 2023 Newsletter

The Long Island Bonsai Society

There are no borders in Bonsai. It brings peace to a palace as it does to the most humble of homes, to the young as to the old, to the rich as to the poor.

It invites us to live within the world it is onto itself, and we are drawn, as no words can express, to live within its shade.

The Long Island Bonsai Society invites all to enjoy this living art that can last for generations.

Generally we meet the 2nd Monday of each month at 7:25 PM at Planting Fields Arboretum, Oyster Bay, NY. Doors open at 7PM for refreshments and general membership discussions. Feel free to bring one of your trees for advice from other members. Most meetings have a tree styling demonstration by a Bonsai artist which is usually raffled off at the end of the meeting. Volunteers are needed to present Tokonoma at each meeting. Please email Jim Genesee at libonsai@yahoo.com if interested. There are two auctions annually with member donated trees, pots, and tools.

Please see meeting schedule in the side bar.

Planting Fields currently has no Covid restrictions. However masks are available.

LIBS recommends wearing a mask in the building to protect your fellow members and family back home.

Members please see our website to place an order on soils. Do not pay on website.

Please pay when you pick up the soil at a meeting or appointment.

2024 Long Island Bonsai Society Annual Membership Dues are being accepted NOW please see Joe Lesnick or send an email to libonsai@yahoo.com

Cash, check, Pay pal.

\$45.00 – single \$65.00 – family \$20.00 – student \$60.00 – support

Your membership will have you entertained and educated by world class bonsai artists (15 in over 21 months pre pandemic). You can participate in hand on workshops led by bonsai artists and our expert members (6 workshops in two years pre pandemic). You have access to Planting Fields on the nights of our meetings. Free monthly loan of Bonsai reference materials!!! Please see Mary for more details and access to our library at our next meeting.

For more information, pictures and updates, please visit Long Island Bonsai Society on Facebook.

LIBS October 9th Meeting: Unfortunately, **Sean Smith** had to cancel at the last minute due to COVID. **Robert Mahler** was gracious enough to step in. He styled an **Oriental Spruce**. The original tree is directly below to the left. The finished tree with Bob and Chris Hayes, who won the finished tree, are pictured to the right. Lower left: Bob is studying the tree to see its flow and where the front should be. Middle: Example of the bark healing over the cambium layer after 16 days on a cut-pasted branch cut. Lower right: Bob wiring the almost completed tree .

As usual, our artist gave PLENTY of information as he styled. Bob recommends fertilizing spruces and pines in the spring to promote back budding. He likes full trees with compact foliage. Best way to do that is to pinch back candles halfway or even 2/3 of the way back as they grow. He recommends the after care for this tree to be placed in cool shade . He took a lot of the foliage off and the inner foliage is now exposed to the sun. **Recovery and adaptation to occur.** The tree will also need to be protected over the winter, since he just wired it. The tree's cambrium flow is stressed when it is wired. The cambrium is the water and nutrient supply chain layer between the bark and woody tissue. The tree needs time to repair the cambrium. If the tree is not protected now and gets cold the tree will just decide this is too much and shut down.



2024 Long Island Bonsai Society Annual Membership Dues are NOW being accepted please see Joe Lesnick or send an email to libonsai@yahoo.com

Cash, check, Pay pal.
\$45.00 – single \$65.00 – family
\$20.00 – student \$60.00 – support

Long Island Bonsai Society
**ANNUAL HOLIDAY LUNCHEON
AND AUCTION**

Saturday, December 16, 2023
12 Noon \$23 per member
Please see Mary Ward or send an email to
libonsai@yahoo.com Cash, check, Pay pal.

October Tokonoma



This beautiful Tokonoma was designed by Jim Genesee. The Japanese White Pine The tree was imported by Bob Mahler a while ago. Scroll of Mt. Fuji and "Hut" Suiseki are also Japanese.

If you would like to create a Tokonoma for one of our meetings please email Jim at libonsai@yahoo.com to discuss.



New Post on Bonsai Tonight

Highlights from the 8th US National Bonsai Exhibition – part 1

By Jonas Dupuich

Submitted by Jim Genesee

Last month, William N. Valavanis hosted the 8th US National Bonsai Exhibition in East Rochester, New York. At the start of the event, Bill reviewed all of the exhibits and seminars he's hosted over the years and determined that this was the 100th show he's staged. This is impossible sounding achievement deserves massive congratulations - thank you, Bill!

This year's event was another big success with great attendance from around the world including demonstrators Koji Hiramatsu (Japan), Gerald Rainville (Canada), Sean Smith (US), and Corin Tomlinson (UK). (A few of our members attended also. Bob Mahler attended)

The exhibit itself featured 304 bonsai. To offer an idea of what the event was like, I'll feature a handful of trees today and next week that highlight two facets of the exhibit. This week we'll look at exotic (non-native) trees that have been in training for many years. Next week, we'll look at North American species at different stages of development.

One of the joys of attending an event like the US National Exhibition is that it features a great diversity of species that I don't see as much of in regional shows. The Brazilian rain tree is a great example of this. The tree got a lot of attention not only because it's big and beautiful, but because it was grown from cutting in New England, a region that isn't typically thought of as a hospitable home for tropicals! (see first picture)

The tree was notable for its interesting foliage design that relied on layers of branch pads arranged in an irregular pattern. It was one of the more complex designs in the exhibit. (see middle tree of first row)

Deciduous trees displayed in leaf often fail to convey the beauty of their branch structure, but a large cork bark Japanese maple did a great job showing off its aged bark from the base of the trunk to the uppermost branches. (see first tree in second row)

Our final tree for today is a multi-trunk Japanese five-needle pine. It takes great care and a gentle touch to arrange white pine branches in such a consistent and artful manner. If you haven't had the experience, I highly recommend giving the species a try - it can be a fantastic challenge to get the branches arranged to one's liking! (last picture)



Brazilian rain tree by Louis Carreiro



Itoigawa juniper



Banyan - Ficus microcarpa



Arakawa Japanese maple by Lucas Glass

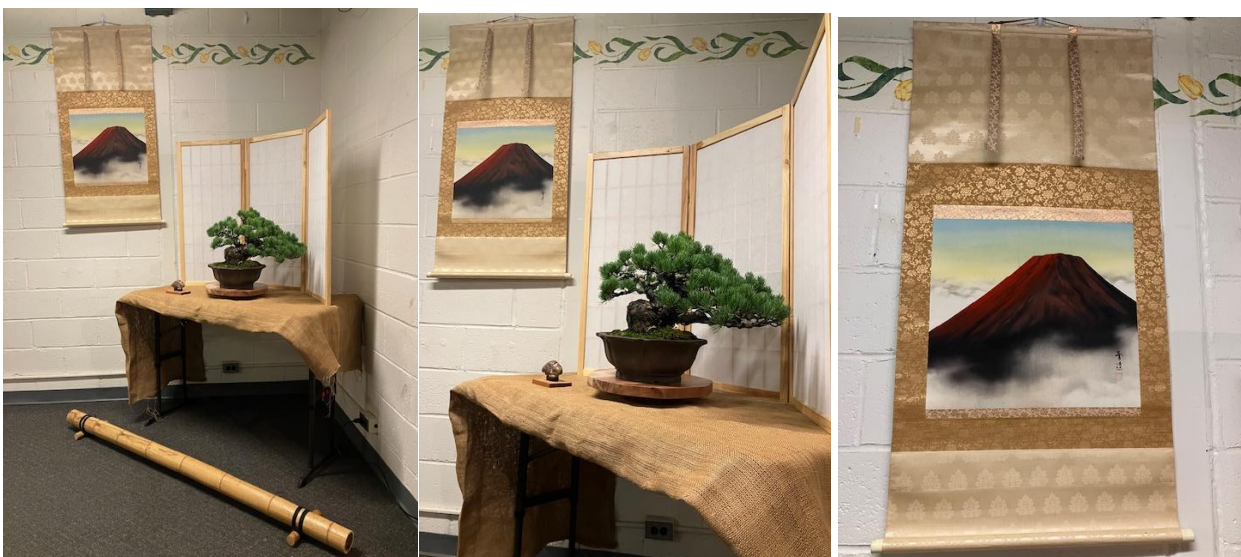


Japanese black pine by Brownlee Currey



White pine by Brian Hollowell

A CLOSER LOOK AT THE TOKANOMA





ENERGY and BONSAI

Another perspective on the “energy of the tree” now energetically intertwined with the “artist’s energy”. Somehow I captured that on a single shot of just the final tree. A negative image of both the tree and Robert’s face with baseball cap brim can be seen examining the tree’s structure, contrasted by a purple haze. He was on the other side of the room at the time. This was not photoshopped. Hal Johnson



BONSAI ONLINE RESOURCES for Suppliers and Educational Sites

Eastern Leaf – short and easy to understand how to teachings

Hérons Bonsai – Peter Chan, easy and concise instructions

Eisei –en Bonsai, Bjorn Bjornholm - many videos, vlogs and on-line courses. His early videos “Bonsai – The Art of Japan” is one of the ‘best for instruction.’

Mirai- Ryan Neil – lengthy videos, be prepared to spend at least an hour. Also has interactive instructions with membership

<https://bonsaimirai.com/blog/mirai-wild-crater-lake>

Bonsai Empire – instructional videos, demos, interviews and shows

Crataegus.com – Michael Hagedon, educational blog

America Bonsai Tool & Supply Co. – www.americanbonsai.com , LIBS club members receive a 10% discount with the code LIBS10

Stone Lantern - stonelantern.com – big blog - anything and everything, always specials going on, reasonable wire prices

Easternleaf.com - wire, tools, etc

DallasBonsai.com – general supplies

Bonsaitonight.com – Educational site with bonsai products

suthinbonsaistudio.com - Expertise in Tropicals, Maples, Junipers and Shohin Bonsai Style

LONG ISLAND RESOURCES

Long Island Bonsai Supply, 539 Deer Park Avenue, Dix Hills, NY 11746. Ph: (516) 521-6940

Besides Bonsai the business is paired with the Koi Market Aquatic Nursery.

Entrance for both is on the north service road of the LIE (I495) just West of exit 51.

Dan Skabeikis has Bonsai plants and pots for sale by appointment only. He is located in Paconic near Southold on the North Fork. Ph: (631) 445-7683

Upcoming Events

(Please check with individual websites for updates)

Mid Atlantic Bonsai Society Spring Festival, Harrisburg, PA April 19-21 2024

MABA convention 2024 Columbus, Ohio USA 8.30-9.1 2024



December 2 & 3, 2023
Kannapolis, North Carolina

**WINTER
SILHOUETTE
BONSAI 11**

www.winterbonsai.net

This is a major national bonsai show with outstanding trees on display, vending tables, demos by well known bonsai artists. It is free to attend.

Demos by world-class bonsai artists William Valavanis, Rodney Clemons, and Tyler Sherrod.

**HOSTED BY STEVE ZEISEL, TYLER SHERROD
& THE TRIANGLE BONSAI SOCIETY**